

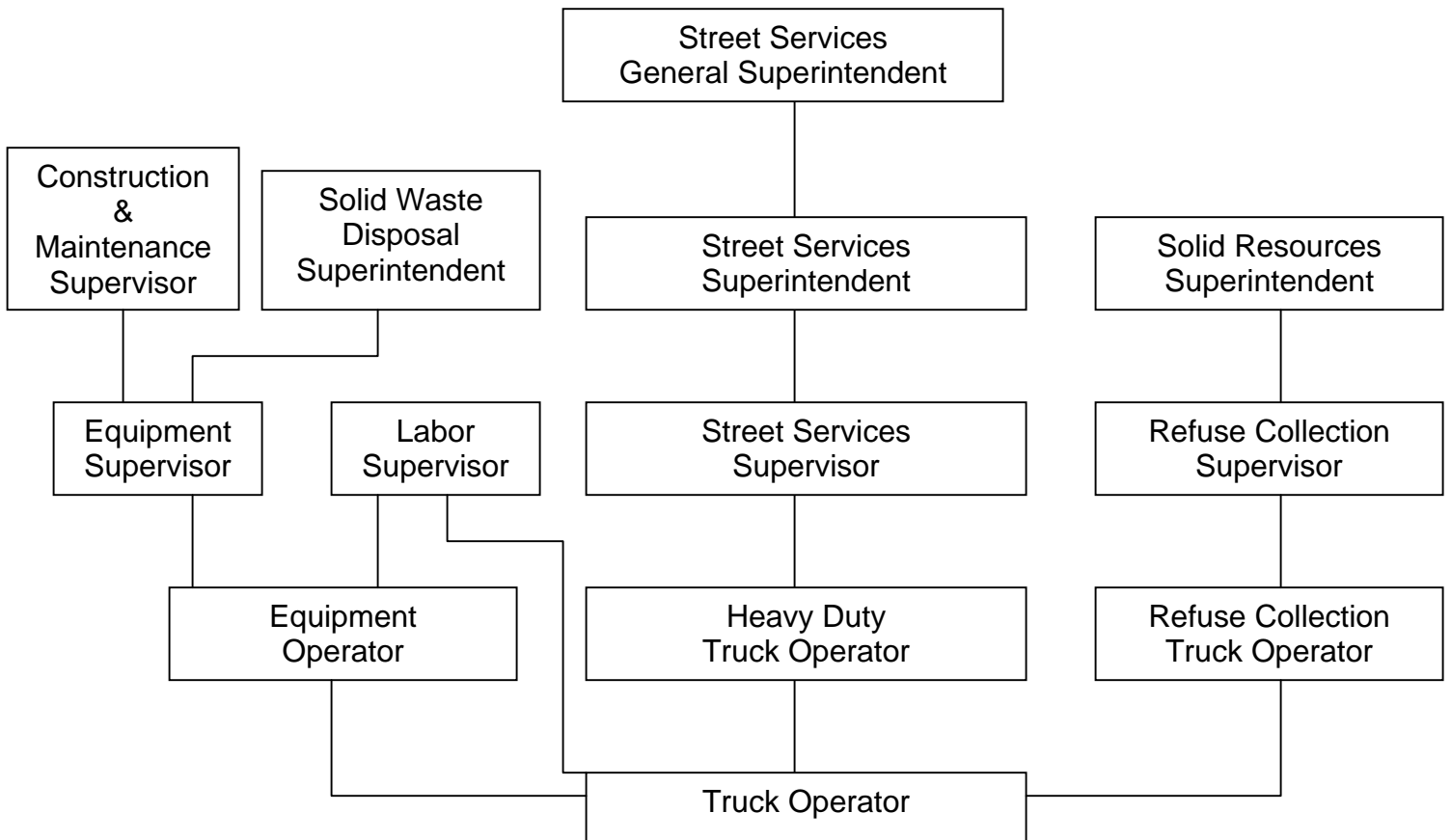
**CITY OF LOS ANGELES
PERSONNEL DEPARTMENT**

**CAREER OPPORTUNITIES FOR
TRUCK OPERATORS**

This information is being given to you to describe potential promotional opportunities as a Truck Operator. The career ladders that are available to Truck Operators are diagrammed below. The duties and requirements for the first promotional levels of these career ladders are described below. We encourage you to examine the options open to you and to prepare yourself for the promotions for which you qualify.

COMMON CAREER LADDERS FOR TRUCK OPERATORS

The chart below shows the normal career paths for Truck Operator. Normal advancement within this series is from Truck Operator to Heavy Duty Truck Operator. With specific types of experience, however, promotion or lateral movement between these lines is also possible.



Duties

Heavy Duty Truck Operator – A Heavy Duty Truck Operator drives trucks with various axles and weight classifications, including truck-trailer combinations, semi-tractor trailers, or tankers; operates mechanical attachments on the truck; and may act as a lead worker or helper in a crew when not driving.

Equipment Operator – An Equipment Operator operates tractors, graders, rollers, scrapers, backhoes, track and wheel loaders, hydro and rigid boom cranes, grinders, trammel screens, compost mixers, profilers, pavers, and other construction and maintenance equipment. This equipment is used in weed abatement programs, construction, repair and maintenance of sidewalks, access ramps, streetscape installations, streets, roads, sewers, storm drains, canals, and water and power infrastructures; compacts soil and debris at refuse disposal sites; makes running repairs and adjustments to equipment; and may lubricate equipment and assist crew members on job site.

Refuse Collection Truck Operator – A Refuse Collection Truck Operator loads and unloads a refuse collection vehicle, drives a refuse collection vehicle, operates mechanical attachments on the vehicle, and may work as a manual laborer or lead a small manual labor crew during periods of the day when not driving.

Requirements

Heavy Duty Truck Operator

1. One year of full-time paid experience in driving a vehicle of more than 26,001 pounds gross vehicle weight (**Candidates must include the gross vehicle weight of the vehicle on the application form**).
2. Equivalent experience in a training capacity may be substituted for the above experience by submitting a “Verification of Work Experience” form, available in Room 100, Personnel Building, with the application.
3. Successful completion of an approved training course in truck operation, including at least one month of behind-the-wheel instruction in vehicles of more than 26,001 pounds gross vehicle weight, may be substituted for six months of the above experience.

Notes:

1. Some candidates may be required to obtain tank, hazardous materials and/or doubles endorsements at the time of their appointment. All positions in the Bureau of Street Services require an unrestricted Class A driver’s license.
2. A copy of the candidate’s Class A driver’s license and valid medical certificate must be attached to the application at the time of filing.
3. Candidates who have a record of serious or frequent traffic violations will be disqualified.

Equipment Operator

1. Two years of full-time paid experience in operating construction or road maintenance equipment, including tractors or cranes (you must list all types of equipment operated when describing experience).
2. A certificate of satisfactory completion of the Los Angeles Board of Education course, Heavy Equipment Operator, or for the Equipment Operator Training course given by either the City of Los Angeles Public Works Bureau of Street Services or the City of Los Angeles Department of Water and Power, may be substituted for six months of experience.

Refuse Collection Truck Operator

1. One year of full-time paid experience in driving a truck with a gross vehicle weight loaded of 7,000 pounds or more. THE GROSS VEHICLE WEIGHT MUST BE LISTED ON THE APPLICATION FORM. (See Notes A and B below); **and**
2. Presentation of a valid Class B California driver's license (no permits will be accepted) and a medical certificate approved by the State of California, Department of Motor Vehicles. (See Notes C and D below); **and**
3. Receiving a passing score in the written test portion of the examination.

Notes:

- A. A certificate of satisfactory completion of an approved training course in truck operation, including at least one month of behind-the-wheel instruction in vehicles of more than 28,000 pounds gross vehicle weight, may be substituted for 6 months of the required experience.
- B. Experience gained in a training capacity with the City of Los Angeles under Requirement 1 may be accepted upon verification. Candidates subject to this note must submit a completed "Verification of Work Experience" form at the time of filing. **Candidates who fail to submit this form will be disqualified.**
- C. A photocopy of the applicant's valid Class B California Driver's License and medical certificate approved by the State of California, Department of Motor Vehicles, must be submitted with the application at the time of filing. The application will be rejected if this condition is not met.
- D. At the time of the performance test, all candidates must possess and present the required license and medical certificate. Failure to do so, will result in disqualification.
- E. Candidates who have a record of serious or frequent traffic violations

1. Candidates who possess a Certificate of Proficiency issued by the City's Bureau of Sanitation, indicating that they have completed an on-the-job training course as a Refuse Collection Truck Operator, are exempt from the qualifying written test. The Certificate of Proficiency must be attached to the regular City employment application at the time of filing.
2. The qualifying score is determined subsequent to the qualifying written test and is based on the overall performance of the candidate group and the projected number of vacancies.

PREPARING YOURSELF FOR PROMOTION

1. Broaden your work experience by taking advantage of job rotation and transfer opportunities. Take advantage of on-the-job training opportunities relating to your work.
2. Take advantage of formal education opportunities relating to your work.
3. Learn and stay abreast of laws, procedures, policies and practices relating to your career ladder.
4. Carefully review examination bulletins and class specifications for promotional classes to determine the kinds of skills, knowledges and abilities you need to develop for promotion.
5. Request for Notification cards may be completed in Room 100 of the Personnel Building (847-9240) to notify you by mail when a specific examination is open for filing. Familiarize yourself with the areas in your work location where weekly job bulletins are posted.
6. Employees may obtain career counseling from the Personnel Department's Employee Development Section, (213) 847-9200, Room 380, Personnel Building.

(Rev. 8/04)