

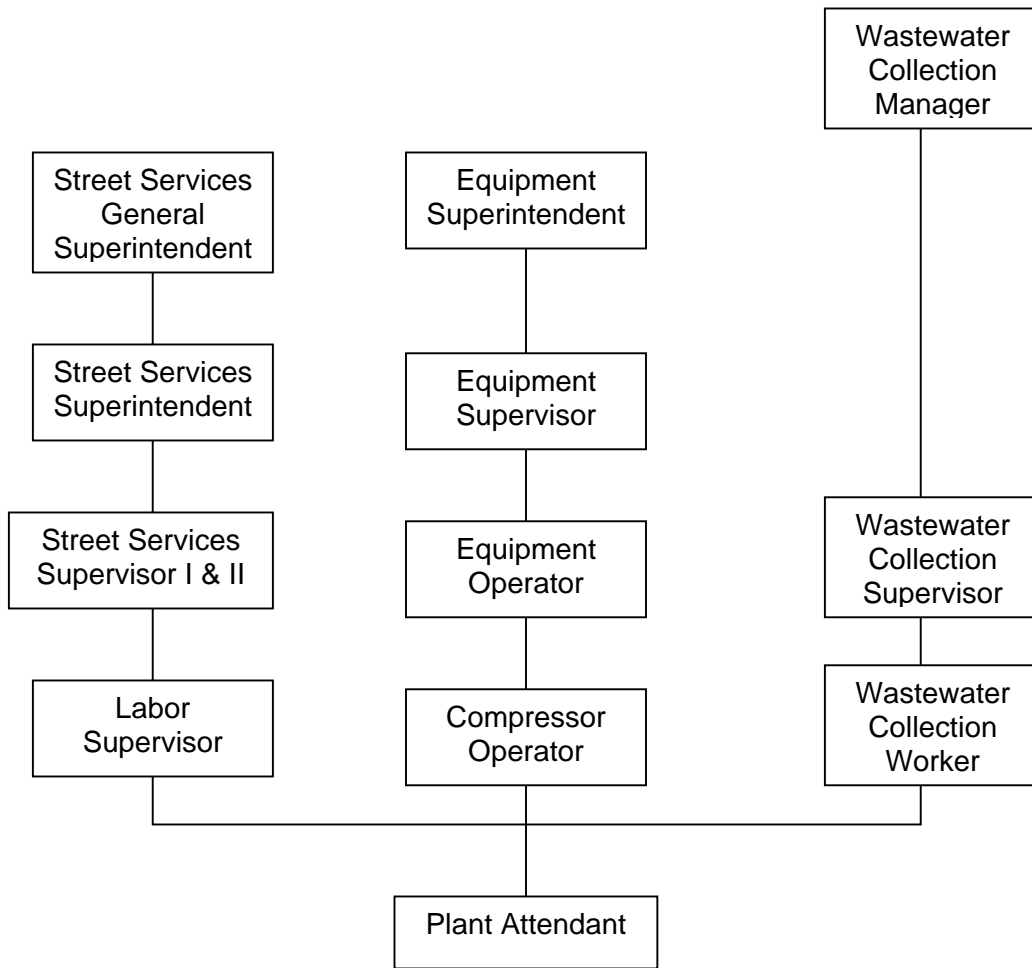
**CITY OF LOS ANGELES
PERSONNEL DEPARTMENT**

CAREER OPPORTUNITIES FOR PLANT ATTENDANT

This information is being given to you to describe potential promotional opportunities as a Plant Attendant. The career ladders that Plant Attendants most commonly enter into are diagrammed below. The duties and requirements for the first promotional levels of these career ladders are also described. We encourage you to examine the options open to you and to prepare yourself for the promotions for which you qualify.

COMMON CAREER LADDERS FOR PLANT ATTENDANT

The chart below shows the normal career paths of Plant Attendant. For example, normal advancement for Plant Attendant is from Senior Wastewater Collection worker to Wastewater Collection Supervisor. With specific types of experience, however, promotion or lateral movement between these lines is also possible.



DUTIES AND REQUIREMENTS OF FIRST PROMOTIONAL LEVELS

Duties

Labor Supervisor – A Labor Supervisor assigns, reviews and evaluates the work of a labor crew consisting of laborers, semiskilled workers and equipment operators engaged in various construction and maintenance projects; applies sound supervisory principles and techniques in building and maintaining an effective work force; and fulfills equal employment opportunity responsibilities.

Compressor Operator – A Compressor Operator operates piston or rotary type air compressors; attends, maintains, adjusts, and makes minor repairs to compressors, pneumatic tools, and auxiliary equipment.

Wastewater Collection Worker – A Wastewater Collection Worker performs a variety of semi-skilled manual tasks in the maintenance and repair of sanitary sewers and storm drains; or may act as a working supervisor on a crew performing such work.

Requirements

Labor Supervisor

1. Four years of full-time paid experience as a manual laborer or semiskilled worker in construction or maintenance work; **or**
2. Two years of full-time paid experience in inspecting construction work; **or**
3. Two years of full-time paid experience as leader of a crew of manual or semiskilled workers in construction or maintenance work; **or**
4. Two years of full-time paid experience supervising employees performing work connected with construction or maintenance activities.

Compressor Operator

One year of full-time paid experience in the operation or maintenance of air compressors, heavy pneumatic tools, or internal combustion engines used in construction or maintenance work.

Wastewater Collection Worker

1. Two years of full-time paid experience in construction or maintenance work, one year of which is in the maintenance, repair or construction of sanitary sewers or storm drains.
2. A valid Class "B" driver's license will be required by the fourth month of the probationary period.

PREPARING YOURSELF FOR PROMOTION

1. Broaden your work experience by taking advantage of job rotation and transfer opportunities. Take advantage of on-the-job training opportunities relating to your work.
2. Take advantage of formal education opportunities relating to your work.
3. Learn and stay abreast of laws, procedures, policies and practices relating to your career ladder.
4. Carefully review examination bulletins and class specifications for promotional classes to determine the kinds of skills, knowledges and abilities you need to develop for promotion.
5. Request for Notification cards may be completed in Room 100 of the Personnel Building (213) 847-9240 to notify you by mail when a specific examination is open for filing. Familiarize yourself with the areas in your work location where weekly job bulletins are posted.
6. Employees may obtain career counseling from the Personnel Department's Employee Development Section, (213) 847-9800, in Room 380, Personnel Building.