

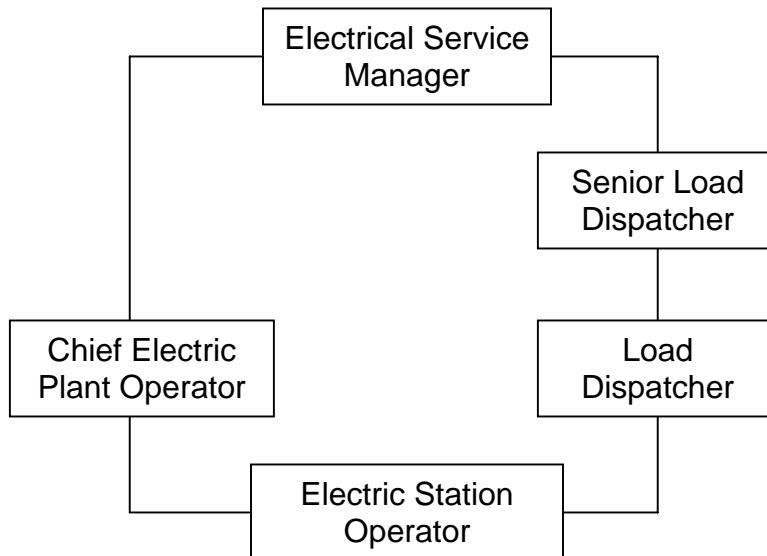
**CITY OF LOS ANGELES
PERSONNEL DEPARTMENT**

CAREER OPPORTUNITIES FOR ELECTRIC STATION OPERATOR

This information is being given to you to describe potential promotional opportunities as an Electric Station Operator. The career ladders that Electric Station Operators most commonly enter into are diagrammed below. The duties and requirements for the first promotional levels of these career ladders are also described. We encourage you to examine the options open to you and to prepare yourself for the promotion for which you qualify.

COMMON CAREER LADDERS FOR ELECTRIC STATION OPERATOR

The chart below shows the normal career paths of Electric Station Operator. Normal advancement within the series is to Chief Electric Plant Operator or Load Dispatcher. With specific types of experience, however, promotion or lateral movement between these lines is also possible.



DUTIES AND REQUIREMENTS OF FIRST PROMOTIONAL LEVEL

Load Dispatcher:

Duties: A Load Dispatcher exercises, or participates in, centralized control over electric transmission and distribution lines and generating and other electrical equipment of an electrical system, directs switching to remove lines and equipment from service for routine or emergency work, coordinates restoration of service, coordinates and executes the purchase, sale and scheduling of electrical energy and associated services in accordance with contracts and prearranged and real-time schedules, and other related duties.

Note: All entry-level positions are trainee positions. A Load Dispatcher in a training position must successfully complete an intensive on-the-job Load Dispatcher Training Program and be assigned to a permanent position within one year.

Requirements

1. Two years of full-time paid experience as a load dispatcher, systems operator, or in a position which is at least at that level and provides experience in centralized control over electric transmission lines, distribution lines, generating equipment, and/or other electrical equipment of an electric utility system; **or**
2. Two years of full-time paid experience as a Steam Plant Operator, Senior Electric Trouble Dispatcher, Senior Electric Distribution Mechanic, Senior Electrical Mechanic, or in a position which is at least at that level and provides experience in operating a switchboard controlling the functioning and maintenance of electric equipment and lines in an electric power generating plant or in a receiving, switching, or distribution station; or maintaining an electric distribution system with the City of Los Angeles; **or**
3. Two years of full-time paid experience in a position at least at the level of Electrical Engineering Associate II which provides experience in power system field operations in maintenance of power system control equipment, or the functioning or maintenance of electric equipment and lines in an electric power generating plant, in a receiving, switching or distribution station, or maintaining a distribution system with the City of Los Angeles; **or**
4. Three years of full-time paid experience as an Electric Station Operator or Senior Electrical Tester with the City of Los Angeles; **or**
5. Four years of full-time paid experience as an Electric Trouble Dispatcher, Electrical Mechanic, or Electric Distribution Mechanic with the City of Los Angeles; **or**
6. Four years of full-time paid experience as an Electric Station Operator, Steam Plant Operator, Electrical Mechanic, Lineman, or in a position which is at least at that level and provides experience in operating a switchboard controlling the function or maintenance of electric equipment and lines in an electric power generating plant or in a receiving, switching, or distributing station; or maintaining a distribution system.

Chief Electric Plant Operator

Duties: A Chief Electric Plant Operator assigns, reviews, and evaluates the work of a group of employees engaged in the operation and maintenance of hydroelectric generating plants, substations, or D.C. converter stations; or administers training programs at hydroelectric power plants, converter stations, or substations and switching stations; or plans, organizes, and directs the operation and maintenance of one or more hydroelectric generating plants or all receiving and distributing stations; applies sound supervisory principles and techniques in building and maintaining an effective work force; and fulfills affirmative action responsibilities.

Requirements:

1. Achievement of a qualifying score on the qualifying Chief Electric Plant Operator written test, **and**
2. Five years of full-time paid experience as an Electric Station Operator or in a class which is at least at that level and which provides experience in the operation of power switchboards in a hydroelectric generating plant or in a receiving, distributing, switching or D.C. converter station.

Notes:

The above information was compiled from work done by the Personnel Department in preparing job analyses for examination, classifying jobs, and determining the jobs that would provide qualifying experience for promotional examinations. This information does not replace class specifications and examination bulletins.

PREPARING YOURSELF FOR PROMOTION

1. Broaden your work experience by taking advantage of job rotation and transfer opportunities. Take advantage of on-the-job training opportunities relating to your work.
2. Take advantage of formal education opportunities relating to your work.
3. Learn and stay abreast of laws, procedures, policies and practices relating to your career ladder.
4. Carefully review examination bulletins and class specifications for promotional classes to determine the kinds of skills, knowledges and abilities you need to develop for promotion.
5. Request for Notification cards may be completed in Room 100 of the Personnel Building (847-9240) to notify you by mail when a specific examination is open for filing. Familiarize yourself with the areas in your work location where weekly job bulletins are posted.
6. Employees may obtain career counseling from the Personnel Department's Employee Development Section, (213) 847-9800, in Room 380, Personnel Building.