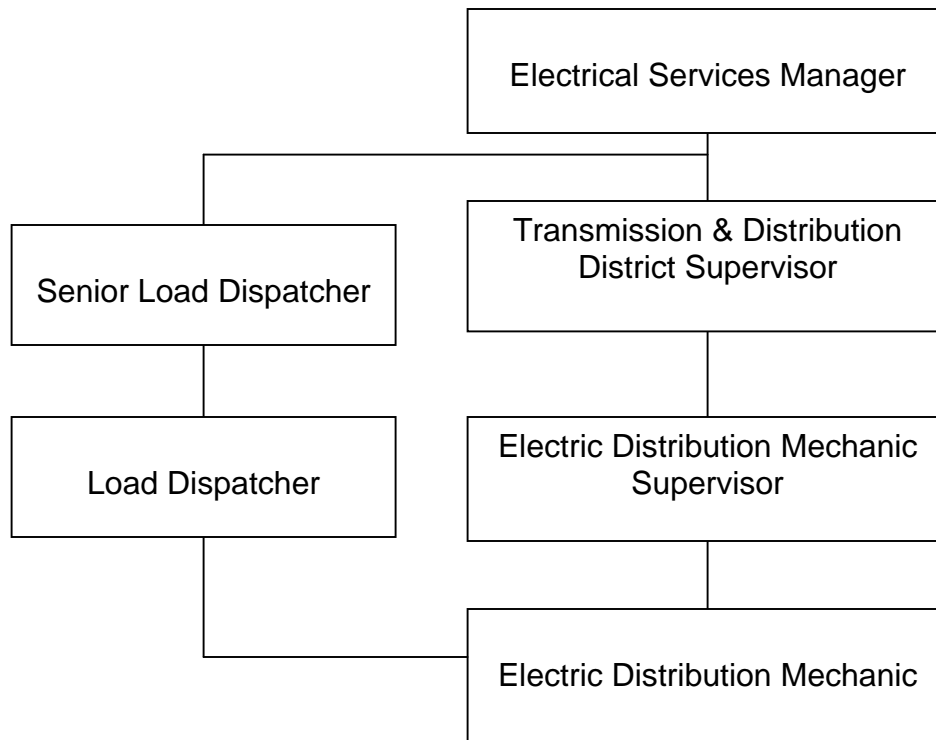


**CITY OF LOS ANGELES  
PERSONNEL DEPARTMENT**

**CAREER OPPORTUNITIES FOR ELECTRIC DISTRIBUTION MECHANIC**

This information is being given to you to describe potential opportunities as an Electric Distribution Mechanic. The career ladders that Electric Distribution Mechanics most commonly enter into are diagrammed below. The typical duties and requirements for the first promotional level of these career ladders are also described. However, these may be subject to change. You may review class specifications and some job bulletins through the Personnel Department's website at [www.lacity.org/PER](http://www.lacity.org/PER) or you may request a copy of this information from the Personnel Department, Room 100. We encourage you to examine the options open to you and to prepare yourself for the promotions for which you qualify.



**DUTIES AND REQUIREMENTS OF FIRST PROMOTIONAL LEVEL**

**Electric Distribution Mechanic Supervisor**

Duties: Assigns, reviews, and evaluates the work of a crew or crews engaged in performing skilled mechanical and electrical work in connection with the construction, maintenance and repair of overhead and underground electric power transmission, subtransmission and distribution lines, cable and equipment and street lighting systems; creates and updates records, documents, and reports with mechanical and electronic devices; or develops specifications on pole and transformer locations, conductor size, and materials to be installed or removed on proposed service extensions and improvements; applies sound supervisory

principles and techniques in building and maintaining an effective workforce; and fulfills equal employment opportunity responsibilities

Requirements: Four years of full-time paid experience as a journey-level electric distribution mechanic, power cable splicer, power line mechanic, line patrol mechanic, senior cable splicer or any combination thereof.

### **Load Dispatcher**

Duties: A Load Dispatcher exercises, or participates in, centralized control over electric transmission and distribution lines and generating and other electrical equipment of an electrical system, directs switching to remove lines and equipment from service for routine or emergency work, coordinates restoration of service, coordinates and executes the purchase, sale and scheduling of electrical energy and associated services in accordance with contracts and prearranged and real-time schedules, and other related duties.

Requirements:

1. Two years of full-time paid experience as a load dispatcher, systems operator, or in a position which is at least at that level and provides experience in centralized control over electric transmission lines, distribution lines, generating equipment, and/or other electrical equipment of an electric utility system; **or**
2. Two years of full-time paid experience as a Steam Plant Operator, Senior Electric Trouble Dispatcher, Senior Electric Distribution Mechanic, Senior Electrical Mechanic, or in a position which is at least at that level and provides experience in operating a switchboard controlling the functioning and maintenance of electric equipment and lines in an electric power generating plant or in a receiving, switching, or distribution station; or maintaining an electric distribution system with the City of Los Angeles; **or**
3. Two years of full-time paid experience in a position at least at the level of Electrical Engineering Associate II which provides experience in power system field operations in maintenance of power system control equipment, or the functioning or maintenance of electric equipment and lines in an electric power generating plant, in a receiving, switching or distribution station, or maintaining a distribution system with the City of Los Angeles; **or**
4. Three years of full-time paid experience as an Electric Station Operator or Senior Electrical Tester with the City of Los Angeles; **or**
5. Four years of full-time paid experience as an Electric Trouble Dispatcher, Electrical Mechanic, or Electric Distribution Mechanic with the City of Los Angeles; **or**
6. Four years of full-time paid experience as an Electric Station Operator, Steam Plant Operator, Electrical Mechanic, Lineman, or in a position which is at least at that level and provides experience in operating a switchboard controlling the function or maintenance of electric equipment and lines in an electric power generating plant or in a receiving, switching, or distributing station; or maintaining a distribution system.

## **PREPARING YOURSELF FOR PROMOTION**

1. Broaden your work experience by taking advantage of job rotation and transfer opportunities. Take advantage of on-the-job training opportunities relating to your work.

2. Take advantage of formal education opportunities relating to your work.
3. Learn and stay abreast of laws, procedures, policies and practices relating to your career ladder.
4. Carefully review examination bulletins and class specifications for promotional classes to determine the kinds of skills, knowledges and abilities you need to develop for promotion.
5. Request for Notification cards may be completed in Room 100 of the Personnel Building (847-9240) to notify you by mail when a specific examination is open for filing. Familiarize yourself with the areas in your work location where weekly job bulletins are posted.
6. Employees may obtain career counseling from the Personnel Department's Employee Development Section, (213) 847-9800, in Room 380, Personnel Building.

(Rev. 7/06)  
(D-3:Career Ladders A-D)