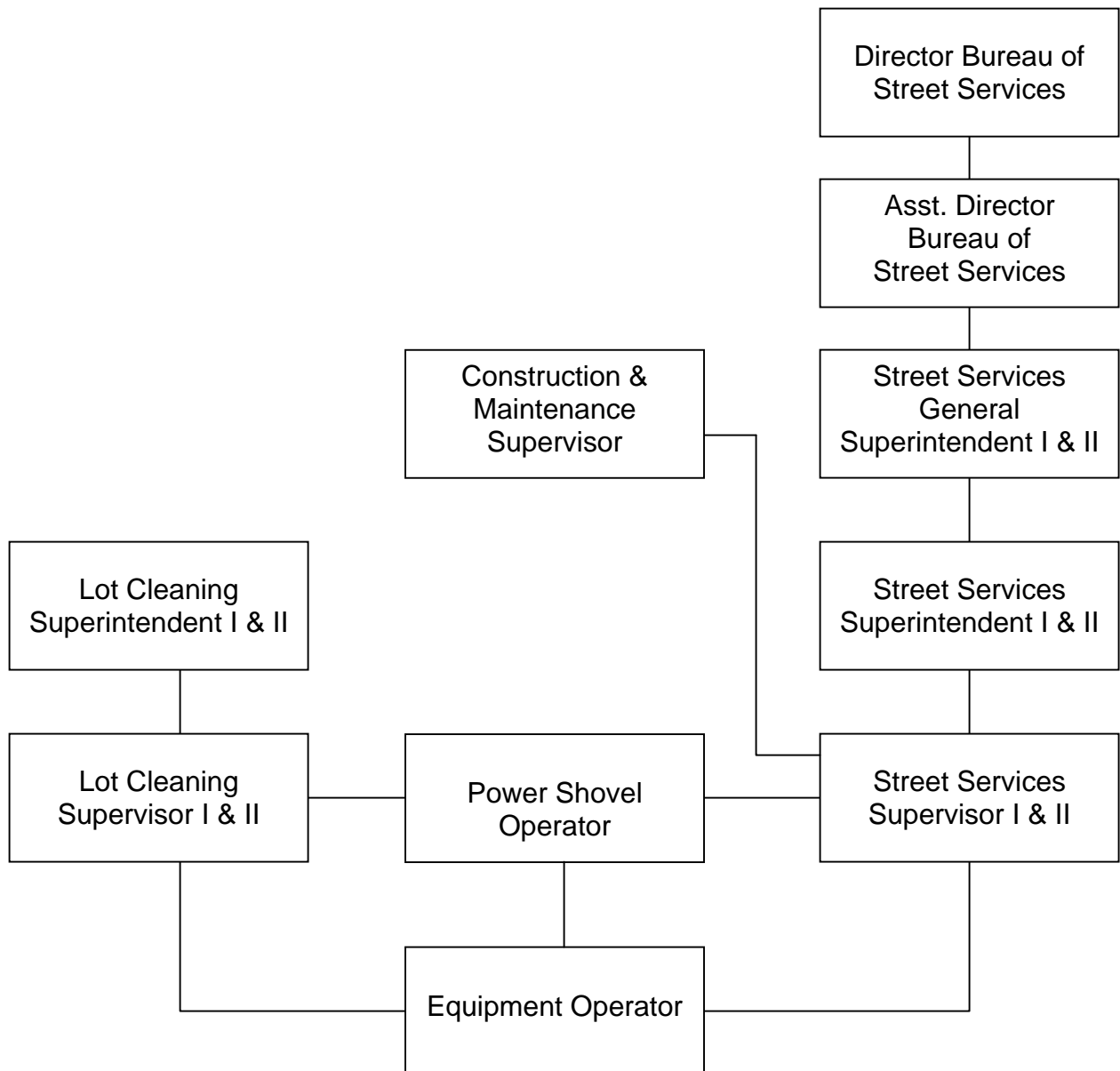


**CITY OF LOS ANGELES
PERSONNEL DEPARTMENT**

CAREER OPPORTUNITIES FOR EQUIPMENT OPERATOR

This information is being given to you to describe potential opportunities as an Equipment Operator. The career ladders that Equipment Operators most commonly enter into are diagrammed below. The typical duties and requirements for the first promotional level of these career ladders are also described. However, these may be subject to change. You may review the class specifications and some job bulletins through the Personnel Department's website at www.lacity.org/per or you may request a copy of this information from the Personnel Department, Room 100. We encourage you to examine the options open to you and to prepare yourself for the promotions for which you qualify.



DUTIES AND REQUIREMENTS OF FIRST PROMOTIONAL LEVEL

DUTIES

Lot Cleaning Supervisor – Supervises a crew engaged in abating weeds, brush and debris from vacant lots and unimproved streets, alleys, grade separations, rights-of-way, parkways and street islands; applies sound supervisory principles and techniques in building and maintaining an effective work force and fulfills equal employment opportunity responsibilities.

Power Shovel Operator – Operates cranes, shovels, grad alls and similar rotating, boom-type excavating and hoisting equipment in connection with varied construction and maintenance activities; and makes running repairs and adjustments to such equipment.

Street Services Supervisor

Assigns, reviews and evaluates the work of one or more crews engaged in repairing, patching, cleaning, remodeling, resurfacing or reconstructing City streets; or assists in coordinating the work of street resurfacing crews; or scheduling and dispatching plant mixes, construction materials and debris transfer equipment; applies sound supervisory principles and techniques in building and maintaining an effective work force; and fulfills equal employment opportunity responsibilities.

REQUIREMENTS

Lot Cleaning Supervisor

1. Three years of full-time paid weed abatement experience at a Truck Operator or in a class which is at least at that level and which provides weed abatement, street use inspection or experience in the line supervision of manual or semi-skilled workers.
2. A "Certificate of Completion" in Street Maintenance from a recognized college or trade school may be substituted for one year of the required experience.

Power Shovel Operator

1. Two years of full-time paid experience in operating rotating, boom-type shovels, draglines, clamshells, pile drivers or heavy duty cranes on a large-scale construction operations; or
2. Three years of full-time paid experience as a Truck Crane Oiler or in a class which is at least at that level and which provides experience in assisting in the operation, maintenance and minor repair of a heavy power crane, shovel or Gradall; or
3. Any combination of the above experience totaling three years.

Street Services Supervisor

1. Four years of full-time paid experience in a position at the level of Maintenance and Construction Helper for the City of Los Angeles in street maintenance field operations, street construction, appurtenant remodeling, reconstruction, resurfacing, repair, street use, construction inspection, lot or street cleaning.
2. Two years of full-time paid experience as a contract truck operator for the Bureau of Street Services Contract Trucking Program may be substituted for two years of the required experience. A "Verification of Work Experience" form must accompany the application when this experience is being claimed.
3. A "Certificate of Completion" in Street Maintenance from a recognized college or trade school may be substituted for one year of the required experience.

Note: The above information does not replace class specifications and examination bulletins.

PREPARING YOURSELF FOR PROMOTION

1. Broaden your work experience by taking advantage of job rotation and transfer opportunities. Take advantage of on-the-job training opportunities relating to your work.
2. Take advantage of formal education opportunities relating to your work.
3. Learn and stay abreast of laws, procedures, policies and practices relating to your career ladder.
4. Carefully review examination bulletins and class specifications for promotional classes to determine the kinds of skills, knowledges and abilities you need to develop for promotion.
5. Request for Notification cards may be completed in Room 100 of the Personnel Building (847-9240) to notify you by mail when a specific examination is open for filing. Familiarize yourself with the areas in your work location where weekly job bulletins are posted.

(Rev. 10/03 gg)